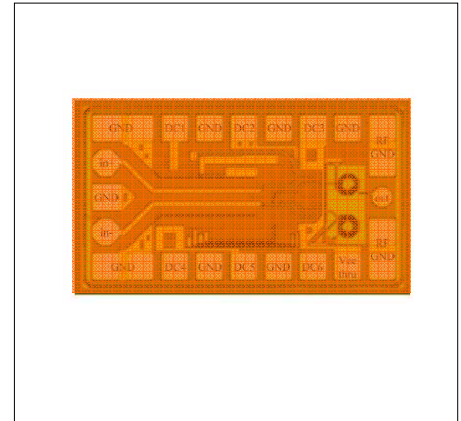


## VCSEL Driver IC 25/28 Gbit/s

Product Code: **A25-120C80**



Sample image only. Actual product may vary.

### Product Description

The A25-120C80 is a high speed VCSEL driver IC designed for directly modulated VCSEL in fiber optic transmission systems. The A25-120C80 operates from a single 3.3V supply voltage typically dissipating less than 120mW of DC power. The device is available as engineering sample.

**Preliminary**

### Features

- up to 28 Gbit/s Laser Diode Driver for VCSELs
- differential input 100  $\Omega$  / single ended output
- low power consumption of 120mW
- small footprint 0.6 mm x 1.0 mm
- supply voltage 3.3V

### Applications

- CEI 28G link
- IEEE 40/100G transceiver
- Fiber optics systems tests
- Research and development
- Proprietary fiber optic links

Parameter	Typical	Notes
Data rate	Up to 28 Gbit/s	
Supply Voltage ( $V_{DD}$ )	3.3 V	
Power dissipation	120 mW	
Differential Input Resistance	100 $\Omega$	
Ambient Operating Temperature	-25°C to +125°C	

All product specifications and descriptions are subject to change without notice.

## Preliminary

### Absolute Maximum Ratings

Parameter	Symbol	Condition	Min	Typ	Max	Unit
Power Supply Voltage	$V_{CC}$	w/ respect to GND	0		4	V
Vxing, Vmod, Vbias	$V_{bias}$ $V_{xing}$ $V_{mod}$	w/ respect to GND	0		5	V
Diff. Input	$V_{in+}$ $V_{in-}$	$V_{in+}$ to $V_{in-}$	-1.0		1.0	V
Operating Temperature	$T_{OP}$		-25		+125	°C

### Electrical performance

Parameter	Symbol	Condition	Min	Typ	Max	Unit
Power Supply Voltage	$V_{CC}$		3.2	3.3	3.4	V
Bias current control, supply voltage for output stage	$V_{xing}$		1.0	2.2	3.3	V
Reference Voltage	$V_{mod}$		1.0	2.2	3.3	V
Modulation current control	$V_{bias}$		1.0	1.0	3.3	V

### Input Parameters

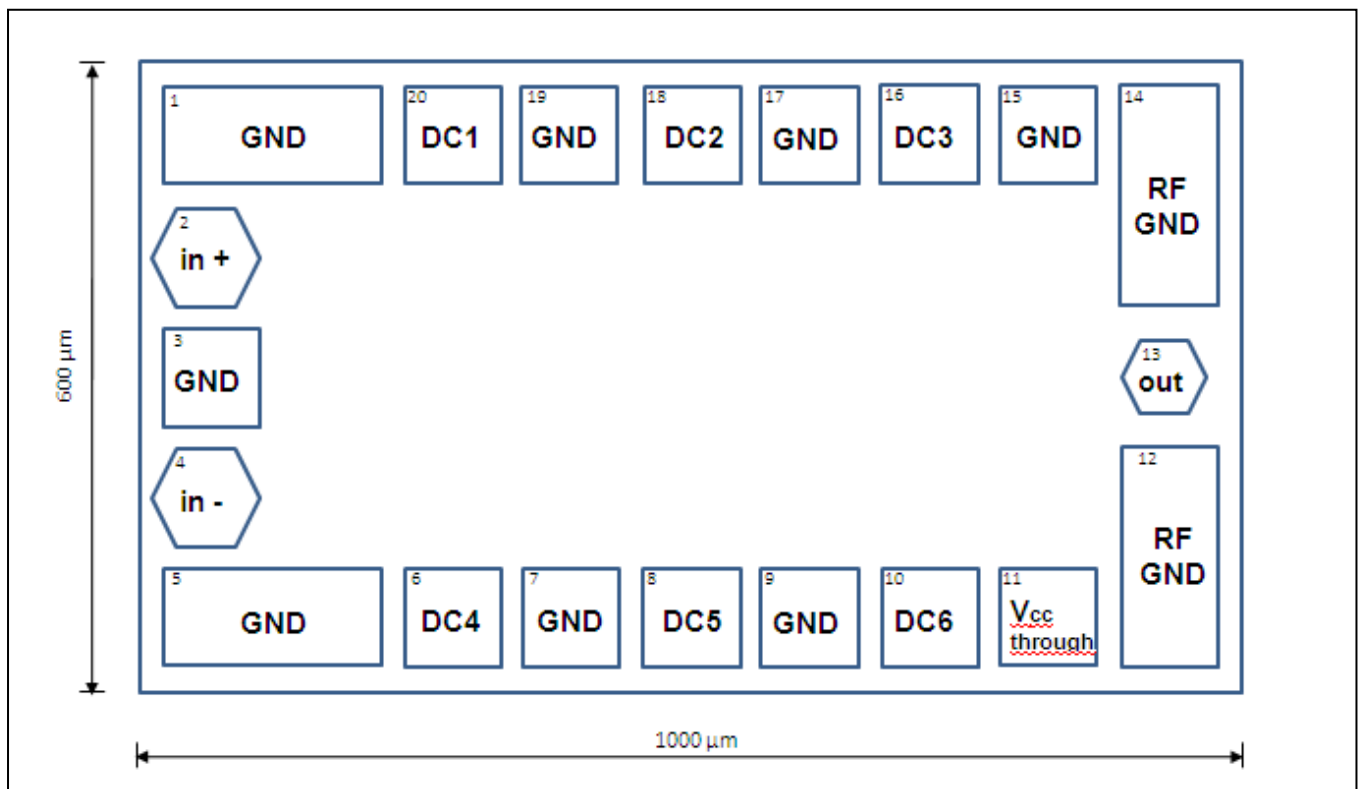
Parameter	Symbol	Condition	Min	Typ	Max	Unit
Input Common Level	$V_{IN CM}$		1.45	1.6	1.75	V
Input Amplitude	$V_{IN DIFF}$	Differential	0.4		0.8	Vpp
Reference Impedance	$Z_{0 DIFF}$	Differential		100		$\Omega$
Input Return Loss	$ S_{11} $	Differential			10	dB

### Output Parameters

Parameter	Symbol	Condition	Min	Typ	Max	Unit
Maximum Data rate		At ER > 0 4dB		28		Gbit/s
Rise / Fall Time	$t_R / t_F$	(20-80%)	10	11	13	ps
Max. Deterministic Jitter	$J_D$				3	Ps
Output Current Swing	$I_{MOD}$		2	4	6	mA
Bias Current	$I_{BIAS}$		2	4	6	mA
Output Complence	$V_{OUT}$		1.8		2.8	V

Preliminary

### Pad Layout



Name	Pin	Symbol	Description	Function
In+	2	Vin +	HF input (positive)	Input
In -	3	Vin -	HF input (negative)	Input
VCSEL Anode	13	out	HF output	Output
VCC1	6	DC1	Supply voltage for bias circuitry	Supply
VCC2	8	DC2	Supply voltage for gain stage	Supply
VCC3	16	DC3	Supply voltage for output stage	Supply
Vxing	6	DC4	Zero crossing control voltage	Input
Vmod	8	DC5	Modulation current ( $I_{MOD}$ ) control	Input
Vbias	10	DC6	Bias current ( $B_{IAS}$ ) control	Input
VCC_Thru	11	Thru	NC	No use
VCSEL cathode	12,14	RF GND	Internally connected GND	Ground
GND	1,3,5,7,9,15,17,19	GND	Ground (0 V)	Ground



## **VCSEL Driver IC A25-120C80**

### **Limited Qualification Notification**

The A25-120C80 has been tested to meet specifications outlined in this data sheet at room temperature. However, it has not undergone full qualification testing or characterization and therefore may not meet the performance specifications over all extremes.

#### **VI Systems GmbH**

Hardenbergstrasse 7  
10623 Berlin  
Tel.: +49 30 3083143 30  
Fax: +49 30 3083143 59  
sales@v-i-systems.com  
www.v-i-systems.com

All product specifications and descriptions are subject to change without notice.  
Please contact our sales department for additional information and to receive a quotation: sales@v-i-systems.com