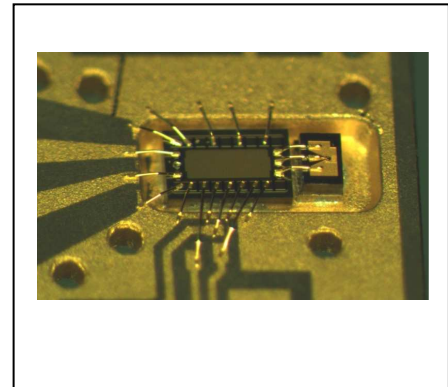


## 40 Gbit/s Receiver Testboard Subassembly (700-890nm)

Product Code: R40-850TB



Sample image only. Actual product may vary.

### Product Description

The R40-850TB optical subassembly testboard utilizes a PIN photodetector and a transimpedance amplifier (TIA) chip assembled onto a customized ceramic board. The device is designed for ultra-high speed data communication test measurements of up to 45 Gbit/s.

### Features

- capable up to 40 Gbit/s data rate
- proprietary PD and TIA
- high frequency package
- ceramic testboard

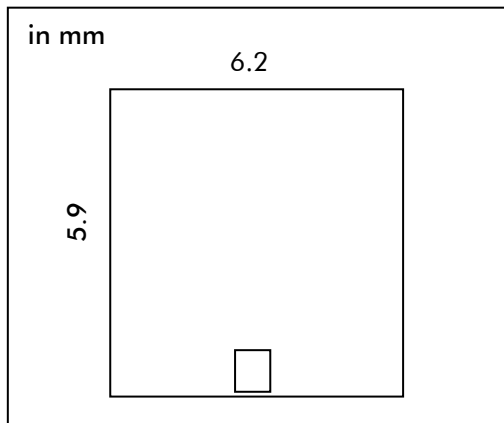
### Applications

- Test of 40/100G short reach prototypes
- Fiber test application
- Research and development

Parameter	Typical (PD chips)	Notes
Operating Wavelength	700 to 890 nm	
3 dB Bandwidth	≥ 30 GHz	
Rise time (20% to 80%)	6 ps	
FWHM Pulse Width Response	12 ps @ -2V	< 3 ps TiSa input pulse
Responsivity	0.4 A/W	
Dark Current	< 10 pA	
Reverse bias voltage	-2 to -4 volts	
Maximum input power	2 mW @ 850 nm	

### R40-850TB-WB

#### Dimensions (flip-chip version)

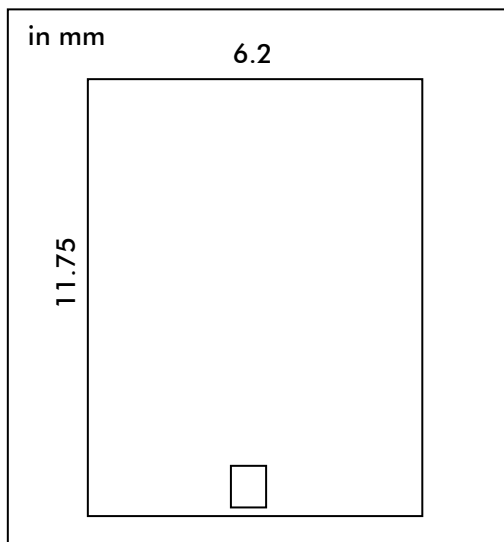


#### Pinout

Pin #	Signal	Description
1	Vcc	supply voltage TIA
2	GND	optional
3	GND	optional
4	Vxing	cross point adjustment
5	Vmod	output signal adjustment
6	Vpd	supply voltage for PD
7	Vpd	diff. HF output
8	Vpd2	Diff. HF output

### R40-850TB-FC

#### Dimensions (wire-bond version)

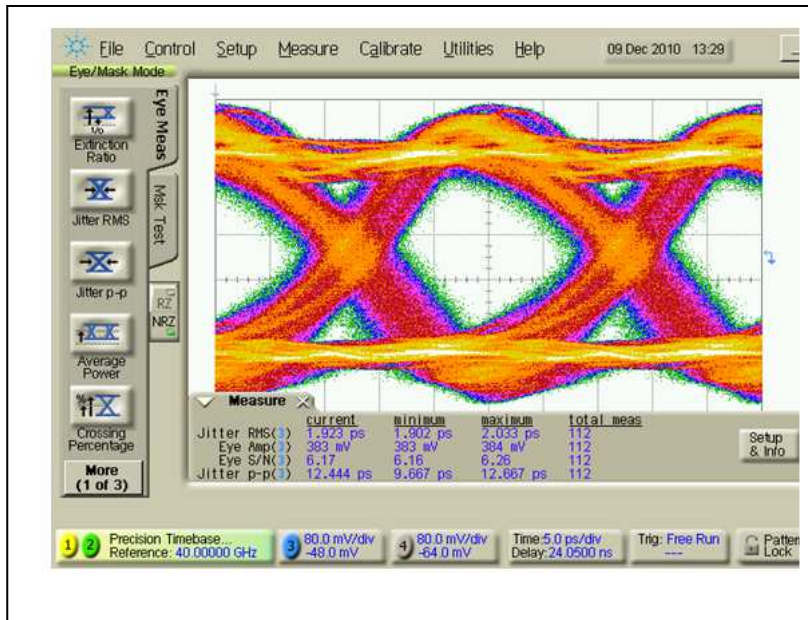


#### VI Systems GmbH

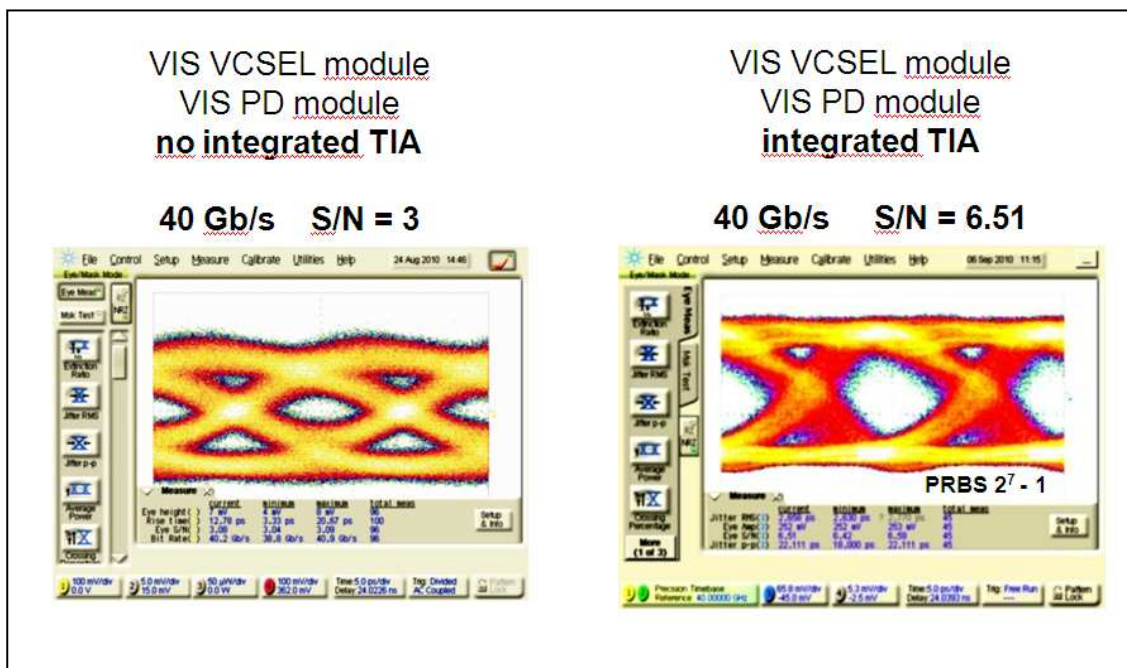
Hardenbergstrasse 7  
10623 Berlin  
Tel.: +49 30 3083143 30  
Fax: +49 30 3083143 59  
sales@v-i-systems.com  
www.v-i-systems.com

All product specifications and descriptions are subject to change without notice.  
Please contact our sales department for additional information and to receive a quotation: sales@v-i-systems.com

### Optical eye pattern at 40 Gbit/s



### Optical eye pattern at 40 Gbit/s



All product specifications and descriptions are subject to change without notice.

Please contact our sales department for additional information and to receive a quotation: [sales@v-i-systems.com](mailto:sales@v-i-systems.com)